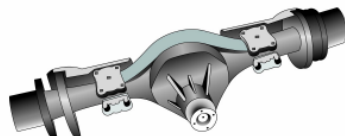


# TRANSMISSION RS FE 80W-90



## SEMI-SYNTHETIC OIL FOR GEARBOXES AND AXLES

### APPLICATIONS

- Semi-synthetic oil with a high viscosity index for the lubrication of gears under severe conditions of use.
- Designed to meet the challenge of the T.D.L. (Total Drive Line) concept: high performance lubrication of hypoid axles as well as synchronized gearboxes, to simplify maintenance without any compromise on components durability.
- Is recommended for use on manual gearboxes, rear axles, or any gear assembly requiring API GL-4, API GL-5, API MT-1 or SAE J2360 levels of performance
- Allows extended service intervals up to 160 000 km on ZF axles and gearboxes (without Intarder), and more generally on all commercial vehicles hypoid axles.
- Suitable for use on Scania gearboxes

### PROPERTIES

- Very good low temperature fluidity due to a high viscosity index, generating benefits during cold starts and limiting drag losses and fuel consumption.
- Very high extreme-pressure performance for optimal protection of gears and bearings against scoring and scuffing.
- Excellent antiwear, anticorrosion and antirust properties for the durability of components including gearbox synchronizers.
- Semi synthetic formulation, very resistant to oxidation and allowing extended drain intervals (up to 160 000 kms) compared to standard mineral.

### CHARACTERISTICS

TRANSMISSION RS FE	Units	Grade SAE 80W-90
Volumetric mass at 15°C	kg/m <sup>3</sup>	886
Viscosity at 40°C	mm <sup>2</sup> /s	115
Viscosity at 100°C	mm <sup>2</sup> /s	14,1
Viscosity Index	-	123
Pour point	°C	- 33

The typical characteristics mentioned represent mean values.

### SPECIFICATIONS

MAN 3343 type M (ex MAN 3343 type ML)  
ZF TE-ML 02B, 05A, 07A, 12E, 16B, 17B, 19B, 21A

Meets the performance requirements of the following international specifications :  
API GL-4  
API GL-5  
API MT-1  
MIL-PRF-2105E / SAE J2360

TOTAL LUBRIFIANTS  
16, rue de la République  
92800 PUTEAUX

TRANSMISSION RS FE 80W-90  
Mise à jour de cette fiche : 03/2008  
Référence étiquette : MPR/11/06



Ce lubrifiant utilisé selon nos recommandations et pour l'application pour laquelle il est prévu ne présente pas de risque particulier.  
Une fiche de données de sécurité conforme à la législation en vigueur dans la C.E. est disponible auprès de votre conseiller commercial.